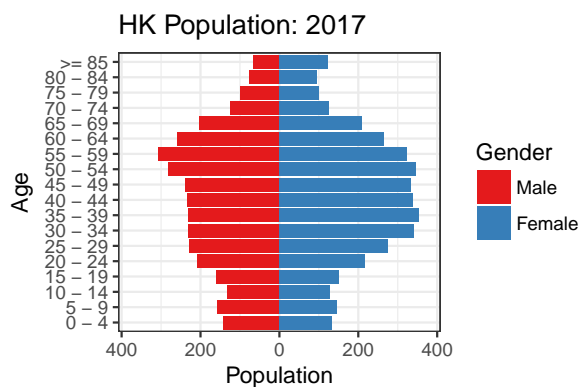
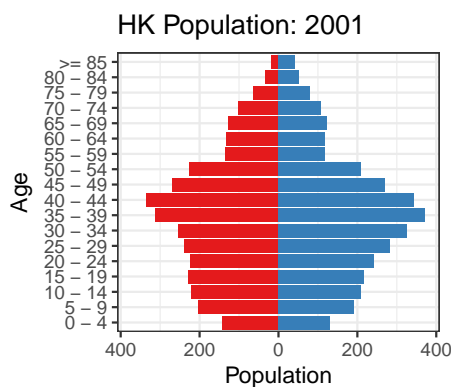
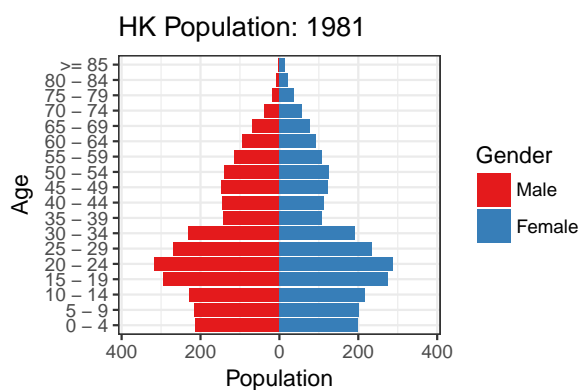
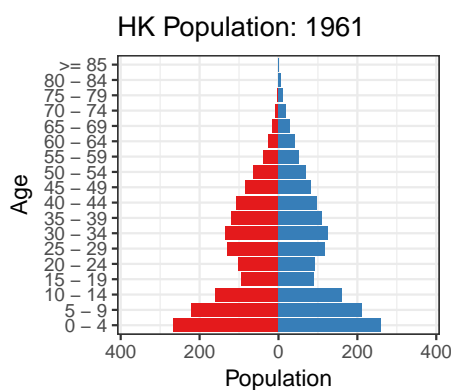


# STAT3622 Data Visualization: In-class Quiz 1

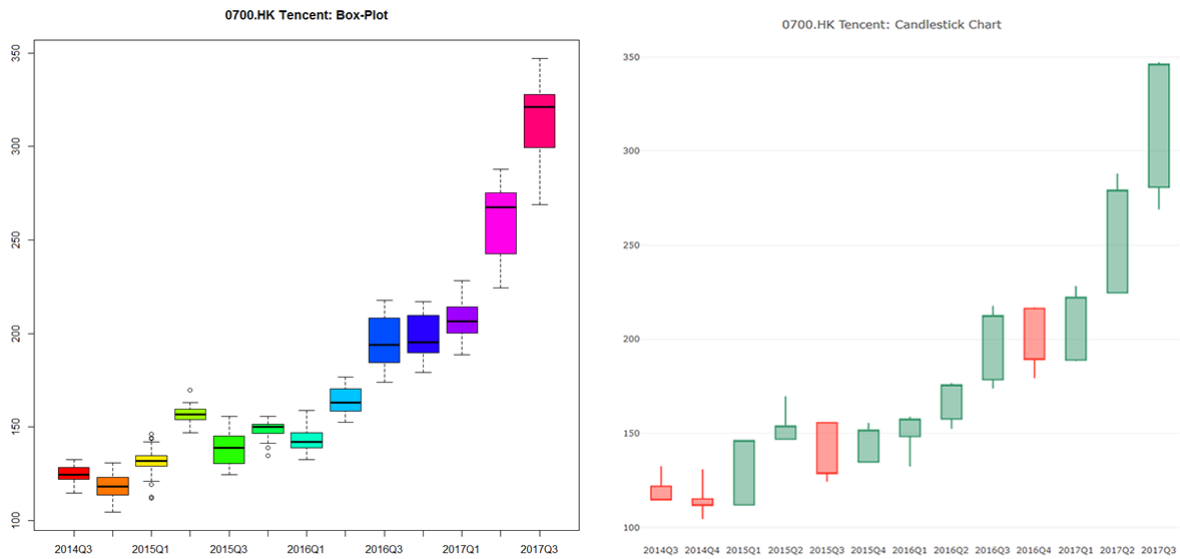
25 September 2017 (40min)

Name: \_\_\_\_\_ ID: \_\_\_\_\_ Score: \_\_\_\_\_

1 (50%) We may find the Hong Kong population data by age group and sex from Census and Statistics Department (<http://www.censtatd.gov.hk/hkstat/sub/sp150.jsp>) and visualize them by population pyramids, e.g. for years 1961, 1981, 2001 and 2017. Please read these charts and list the interesting findings (three or more).



2 (50%) Shown below are boxplot and candle stick charts for Tencent (0700.HK) stock prices in quarterly intervals.



Hint: Understanding candlestick chart (also known as OHLC chart)



Q1: Both boxplot and candlestick chart consist of boxes but have key differences. Tell the differences.

Q2: Suppose you are given the daily stock prices of 0700.HK. To draw the above two kinds of charts, what kind of statistics should be supplied/calculated?